

# PV Pro Mounting Solution

## Roof Anchor Specification



### Anchor Specification

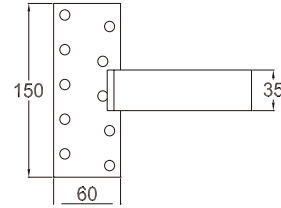
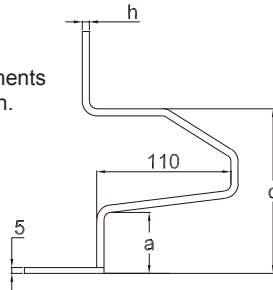
#### Pantile Roof Anchor

Stainless steel, pre-assembled

Various thicknesses of "h" are available to meet the requirements of different supporting strength.

	a	c	h
GB00008	50	136	6

Size in mm.

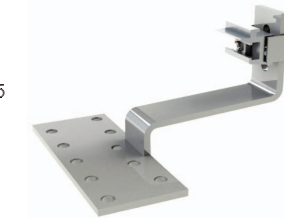
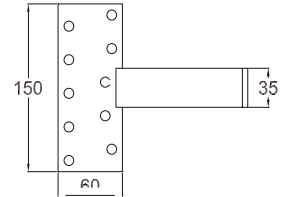
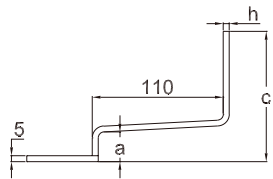


#### Concrete Roof Anchor

Stainless steel, pre-assembled

	a	c	h
GB00075	25	105	5

Size in mm.

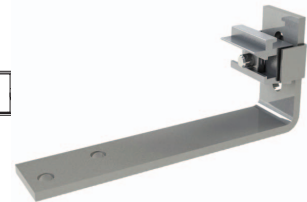
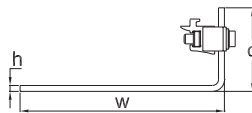


#### Slate Tile Roof Anchor

Stainless steel, pre-assembled

	w	c	h
GB00066	170	70	5

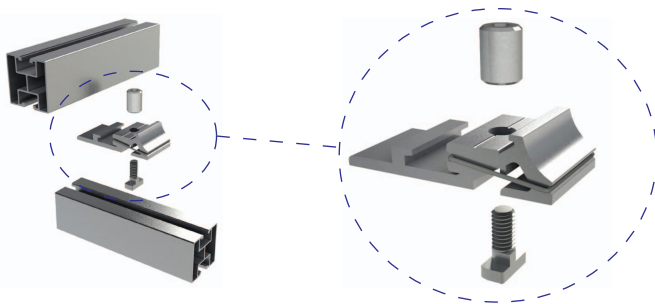
Size in mm.



### Fitting Instruction

All the hooks are supply with pre-fixed attachments. These are a patented part of the roof mounting system. These are spring loaded units which clip into one or the grooves on the rails, and are simply tightened. This is a very quick and simple process with very easy access to the tightening screw.

If modules are installed in landscape orientation, place another layer of aluminium rails perpendicular to the bottom rails. PV Pro offers appropriate components such as X01 for the cross connection.



### Safety. Reliability. Flexibility

